



PLASMA STATION OUTLET EQUIPMENT

Plasma Gas Regulation System

Plasma Station Outlet Equipment consists of pre-assembled piping with regulators for machine air and selected plasma gases.

The appropriate fittings are attached to the outlet side to mate with the Messer supplied hoses. The Station Outlet should be mounted in close proximity to the longitudinal axis power-track entry point.

The customer is responsible for the piping to the inlet side of each Station Outlet assembly.

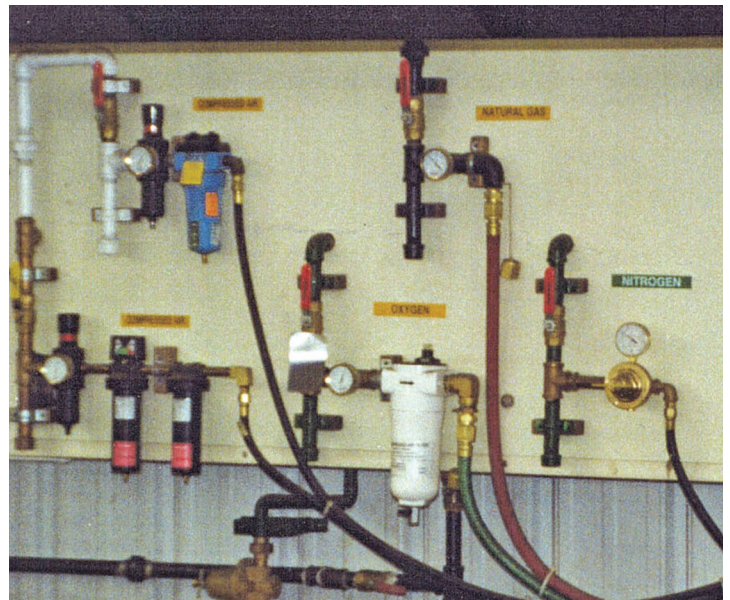
Let the experts at Messer ease your installation task by providing all the correct filters, regulators, valves and fittings. We'll source and assemble so you have one less thing to worry about.

SYSTEM DESCRIPTION

The Plasma Station Outlet Equipment provides filters, regulators, and shut-offs for gases used in a given application.

APPLICATION

Available on all Messer machines; Station Outlet Equipment is required for all machine installations.



Typical in-field installation (mounting by customer)

Messer Cutting Systems, Inc.
W141 N9427 Fountain Boulevard
Menomonee Falls, WI 53051
Phone: 262-255-5520
Fax: 262-255-5170
sales@messercutting.com
www.messer-cs.com