



# PIPE CUTTING SYSTEM PTC500



With the PTC500, Messer Cutting Systems offers a pipe cutting system for its OmniMat® and MultiTherm® ranges of machines. The core is the offline software from HGG, the specialists in 3D-Profilig, which makes the required machine axis control possible in perfect interaction with the Messer machine control Global Control<sup>plus</sup>. Plasma is available as the cutting process. Messer and HGG joined forces to provide a single point of access to the entire scope of cutting technology required to materialize any project in any industry for any fabricator.

Processing of round pipes up to a diameter of 500 mm is possible with the PTC500. With this the pipes can be cut

- with a Plasma torch perpendicular to the pipe surface with the pipe axis rotating or
- using the bevel cutting units Skew Rotator Delta and Skew Rotator Infinity with weld preparations of up to 45° relative to the pipe surface.

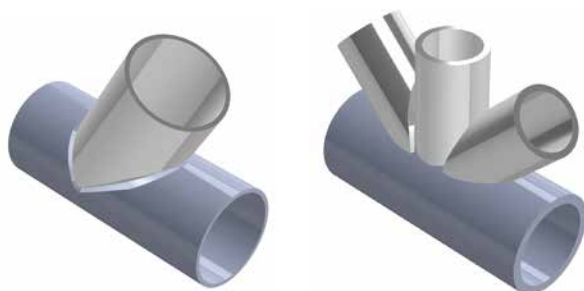
The central axis of the pipe can be variably adjusted with a manual setting of both the pipe support carriages and the driven pipe carriage.

An internal extraction through the pipe is an integral part of the system.

## TECHNICAL DATA

Type of pipe	round
Diameter	50 to 500 mm
Wall thickness	2 to 30 mm
Pipe length*	6000 mm
Max. pipe weight	2000 kg
Width of pipe carriage	600 mm
Width of driven pipe carriage	950 mm
Height driven pipe carriage	1050 mm
Max. cutting speed on pipe	4000 mm/min

\*on request



Messer Cutting Systems GmbH | Otto-Hahn-Strasse 2-4 | 64823 Groß-Umstadt, Germany  
Phone +49 (0) 6078 787-0 | Fax +49 (0) 6078 787-150 | info@messer-cs.de | www.messer-cs.com

The descriptions, technical data and illustrations contained in this document are provided for guidance purposes only and are non-binding. The manufacturer reserves the right to make alterations to products without notice.



# 3D-CUTTING AT ITS BEST



HGG provides a wide range of standalone 3D-Profiling machinery for thermal cutting of pipe, beam and profiles. All machines can connect to your CAD system and cut 3D bevels that are directly ready for welding. Underneath a small selection of the product portfolio. For further information please contact your Messer or HGG distributor or go to [www.hgg-group.com](http://www.hgg-group.com).










## TECHNICAL DATA

				
ProCutter 600	48 mm - 610 mm (2" - 24")		3t	6 m - 12 m 20' - 40'
SPC 1200	48 mm - 1225 mm (2" - 48")		12t	6 m - 12 m* 20' - 40'*
MPC 450 I 1200	48 mm - 1225 mm (2" - 48")	60 <sup>2</sup> mm - 450 <sup>2</sup> mm 2" - 18"	12t	6 m - 12 m* 20' - 40'*
SPC 2000	100 mm - 2035 mm (4" - 80")		30t	6 m - 12 m* 20' - 40'*
SPC 3000	100 mm - 3000 mm (4" - 118")		40t	6 m - 12 m* 20' - 40'*

\*Length customisable by increments of 2 m (6')



							
PCL 600	max. 420 x 275 mm 16.5" x 10.8"	max. 550 x 200 mm 21.7" x 7.9"	max. 550 mm 21.7"	max. 500 x 200 mm 19.7" x 7.9"			max. 500 mm 19.7"
RPC 1200	max. 1220 x 424 mm 48" x 16.7"	max. 590 x 200 mm 23" x 7.9"		max. 500 x 200 mm 19.7" x 7.9"	max. 1220 x 424 mm 48" x 16.7"	max. 600 x 450 mm 23.6" x 17.7"	

**HGG Profiling Equipment B.V.**  
T: + 31 227 50 40 30  
F: + 31 227 50 19 03  
[info@hgg-group.com](mailto:info@hgg-group.com)  
[www.hgg-group.com](http://www.hgg-group.com)

**HGG Americas**  
T: (+1) 330 461 68 55  
E: [americas@hgg-group.com](mailto:americas@hgg-group.com)  
**HGG Asia Pacific**  
T: (+63) 82 282 4500  
E: [asiapacific@hgg-group.com](mailto:asiapacific@hgg-group.com)

**HGG China**  
T: (+86) 136 8163 2558  
E: [hggchina@hgg-group.com](mailto:hggchina@hgg-group.com)  
**HGG Europe**  
T: (+31) 227 50 40 30  
E: [sales@hgg-group.com](mailto:sales@hgg-group.com)

**HGG India**  
T: (+91) 770 2055 222  
E: [hggme@hgg-group.com](mailto:hggme@hgg-group.com)  
**HGG Africa**  
T: (+91) 770 2055 222  
E: [hggme@hgg-group.com](mailto:hggme@hgg-group.com)

**HGG Middle East**  
T: (+971) 55 8077 643  
E: [hggme@hgg-group.com](mailto:hggme@hgg-group.com)  
**HGG Russia**  
T: (+7) 921 355 98 95  
E: [msm@hgg-group.com](mailto:msm@hgg-group.com)